



## INTERNATIONAL JOURNAL OF ENGINEERING SCIENCES & RESEARCH TECHNOLOGY

### Design and Modal Analysis of Spur Gear with Experimental Verification

Miss.Nilofar H Pathan\*, Dr. Vikrama Singh, Prof.P.P.Shreshtha

<sup>1</sup>M.E.Mech.Design Engineering Dept.Pad.Dr.D.Y.Patil Institute of Engineering & Tech.Pimpri Pune,India

<sup>2</sup>HOD Mech.Engineering Dept.Pad.Dr.D.Y.Patil, Institute of Engineering & Tech.Pimpri Pune, India

<sup>3</sup>Professor Mech. Engineering Dept.Pad.Dr.D.Y.Patil, Institute of Engineering & Tech.Pimpri Pune,India

#### Abstract

Present paper covers the design,modal analysis and results of experimental tests of spur gear.Effort is to increase the fundamental frequencies of existing gear and to improve performance of existing gear without compromising on the performance.Result of FEM analysis is compared with the experimental result and analytical results.

**Keywords:** modal analysis

#### Introduction

Gears are used in machines and vehicles for the transmission of power. The design of gears is highly complicated involving many constraints such as strength, pitting resistance, bending stress, scoring wear, and interference in involutes gears etc. The concentration is focused on spur gear sets which are used to transmit motion between parallel shafts. The toothed gear transmission stands unique due to its high efficiency, reliable operation.

The spur gear is the first choice option for gears except when high speeds, loads and ratios direct towards other by using the vibration analysis and parameters such as natural frequency and vibration mode can be calculated. .

Gear noise and vibration is a major problem in many power transmission application .this problem becomes more significant in applications with higher operating speeds the where vibratory excitation which is related to the gear transmission error.[6]

Now a days most of the mechanical systems are subjected to dynamic loading which causes & shortens of the usable time, crack, noise and fatigue, in general the total effect of

work for the mechanical system is lowered. Reasons for such behavior are type of loading, construction and conditions of work where the mechanical systems operate.

#### Objectives

1. To study the modal frequencies for certain mode shapes, in order to obtain the controllable dynamic parameters of the gear set.
2. Finding the natural frequencies of the system before making the gears.
3. To avoid resonance.
- 4.To improve the performance of exiting gear without compromising on the performance.
- 5.To increase the fundamental frequencies of gear & pinion at optimum weight.

#### Problem definition

Modal oscillation of gearbox housing walls and other elastic structures is very important for the noise emitted by systems into the surroundings. Modal activity of housing walls is in direct relation with the structure and intensity of noise emitted by the gearbox into the surrounding. Therefore, research of modal activities is of general importance for modeling the process of generation of noise in mechanical systems. The noise emitted into the surroundings by the gearbox is mostly the consequence of natural oscillation of the housing. [5]

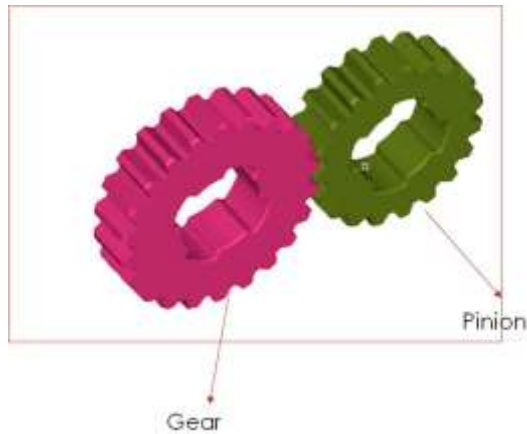


Fig1.3D model of spur gear.

**Model of exiting gear**

Tabel 1 : Gears parameters

Parameter	Pinion	Gear
Thickness	2.884 mm	2.8 mm
Width	9.842 mm	9.842 mm
Root radius	16.271 mm	19.558 mm
Addendum radius	19.05 mm	22.225 mm
Pitch Circle radius	17.646 mm	20.350 mm
Pitch	5.8 mm	5.956 mm
Module	1.85	1.52
No. of teeth	19	22

1. Material Used: EN9
2. Type Spur Gear
3. Application for case Study: Automotive.

Modeling of spur gear is in CATIA

Catia stand for computer aided three dimensional interactive application. The most widely used software in modeling now a days is a catia.

**Analytical Method**

The result of studying free oscillations of the system are own frequencies or own vectors.the simplest case as the system without damping and action of external forces so it is described by a differtional equation.

$$m \ddot{X} + k \dot{x} = 0$$

fundamental frequency is

$$w = \sqrt{\frac{k}{m}}$$

k= stiffness

natural frequency is

$$f = \frac{1}{2\pi} \sqrt{\frac{k}{m}}$$

apply torsional theory , rotational stiffness is

for pinion ,

$$K_1 = \frac{J_p G}{R_p} \dots\dots\dots(1)$$

where ,

$$J_p = \frac{\pi}{32} (D_p^4 - d^4)$$

$$G = E/2(1 + \nu)$$

"G" is the rigidity modulus of the material

"J" is the second moment of area about the rotation axis

For Gear,

$$K_2 = \frac{J_g G}{R_g} \dots\dots\dots(2)$$

$$K_{eq} = \frac{K_1 \cdot K_2}{K_1 + K_2}$$

for pinion,

$$f_p = \frac{1}{2\pi} \sqrt{\frac{K_{eq}}{I_p}} \dots\dots\dots(a)$$

for gear,

$$f_g = \frac{1}{2\pi} \sqrt{\frac{K_{eq}}{I_g}} \dots\dots\dots(b)$$

with the use of torsional theory we calculate natural frequency[9]

**Modal analysis of exiting gears**

Modal analysis, which means the study of the structure mode shape under excitation to its natural frequency, is important in the design stage.

The finite element program Nastran was used to calculate the natural frequencies & mode shape of spur gear.

Modal analysis can predict the resonance of structure excited by the dynamic input.

Vibration (modal analysis) is a very effective technique for gear box health monitoring & fault detection. Health monitoring for gearbox is an improvement aspect to avoid failure of the machine. Using the free vibration analysis one calculates critical parameters such as natural frequencies & vibration modes that are essential for almost all dynamic investigations.

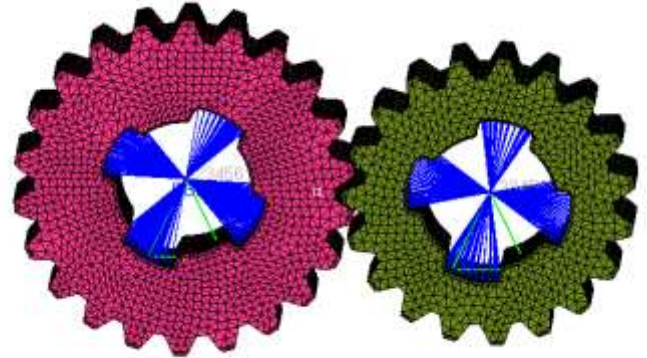
**Mesh setting of the gear in nastran**

Table 2 Material property

Material (steel)	Young's modulus <sup>5</sup> mpa	Poisons ratio	Density Kg/mm <sup>3</sup> e-4
EN9	2.06	0.3	7.8
EN19B	2.10	0.29	7.8
EN353	2.2207	0.264	7.8

The gear designs are imported. In modal analysis using FEM, gear model is meshed with tetrahedral elements. The model consists of 101501 nodes & elements 62081. FEM is a technique of predicting the performance of a real structure under precise load and displacement condition.

**Boundary condition of exiting gear**



**SPC (SINGLE POINT CONSTRAINT 123456)**

Fig.2 Mesh model with boundary Condition

The mode shape of the gear in FEM are calculated independently of the excitation, means that the structure is only mass and stiffness distribution dependent.

**Mode shapes and frequencies of exiting gears with two different material (EN19B AND EN 353)**

Table 3 Two modes of frequencies for EN9 material

Operating Mode	Frequency (Analytical)	Frequency (nastran)	Percentage Difference
Mode (pinion)	30908	32227	4
Mode (gear)	44795	41561	7

The percentage difference is calculated by normalizing the nastran data with the analytical values. As seen in Table I the values of the frequencies computed by the analytical formulas agree well with the values obtained in nastran. For the nastran analysis, spur gear was meshed with RBE2 elements with the guided boundary conditions applied at the centre at SPC.

EN9 is existing material. its frequencies is 32227 HZ and effort is to increase the fundamental frequencies

by changing material and to improve performance of existing gear without compromising on performance.

The present used material of a spur gears is EN9 in this project gear is designed using two different material EN 19B and EN 353 . Analytical calculation and analysis is done for spur gear using EN9,EN19B and EN353.3D Modeling is done in CATIA V5 and analysis is done in NASTRAN

Table 4 Two Modes Of Frequencies for EN19b material

Operatin g mode	Frequency (Analytical)	Frequency (nastran)	Percentage Difference
Mode (pinion)	30850	32220	4
Mode (gear)	44350	41800	7

Modal analysis of different two materials EN9 and EN19B having same frequencies so we use another material(EN353).

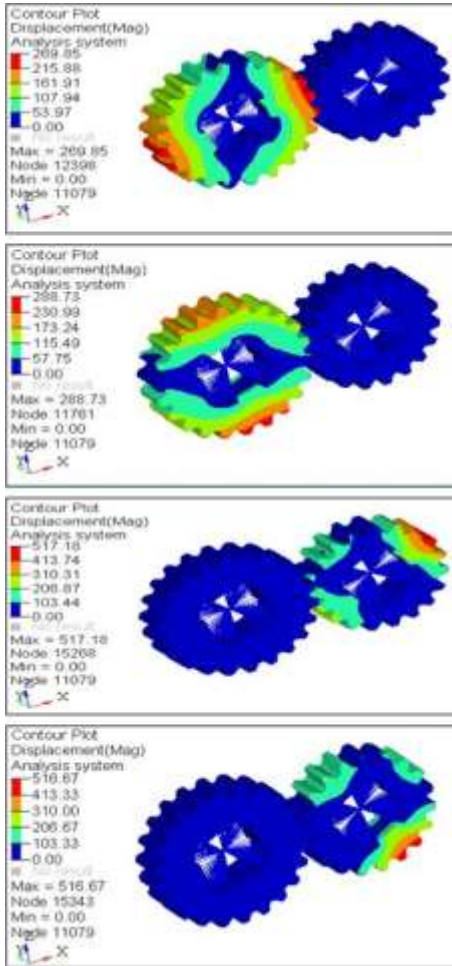


Fig 3. Mode shapes for EN9 Material

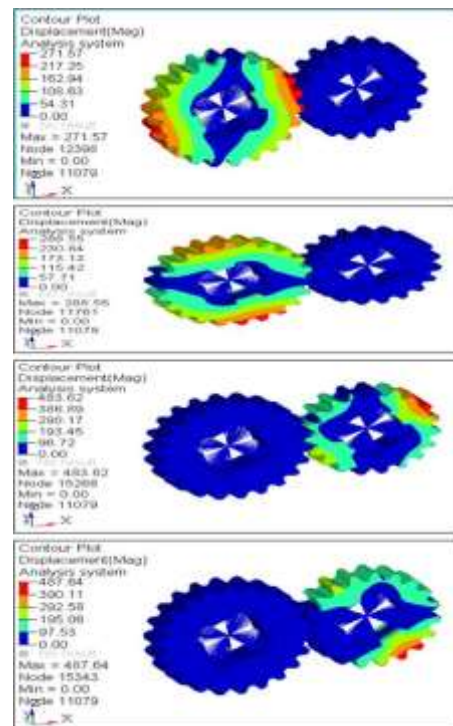


Fig 4 .mode shapes for EN19B material.

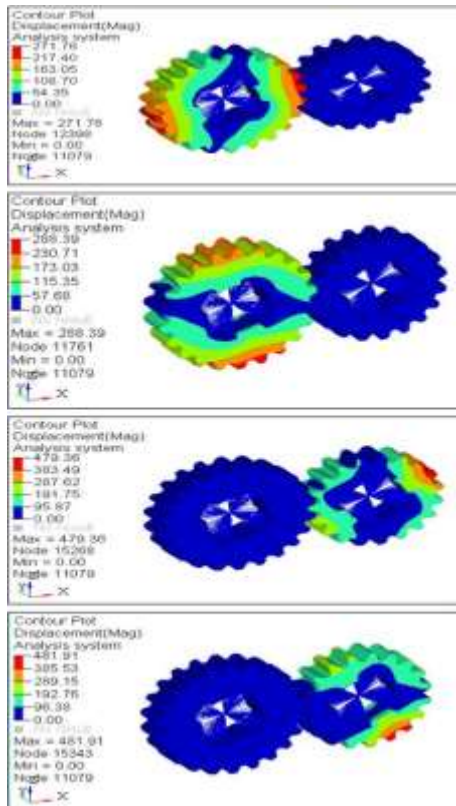


Fig 5.mode shapes for EN353 material.

After modal analysis of EN353 material have different mode shapes and frequencies.EN353 material frequencies is increased.It is more than EN9 material.

Table 5 Two Mode Frequencies for EN353 material

Operati ng Mode	Frequency (Analytical)	Frequency (nastran)	Percentage Difference
Mode (for pinion)	31367	33350	5.90
Mode (for gear)	44424	51780	14

Experimental set up



Fig No .6 Test set up

It is proposed to induce a defect on a particular tooth of a chosen gear in the gear box & generate the vibrations.

To sense the vibration signal generated by the gearbox an accelerometer has been used. In order to process the vibration signal sensed by the accelerometer on FFT Analyzer has been selected. With the use of experimental set up we can identify the natural frequencies for the component using the principle of resonance.

Typically FFT Analyzer is used for determining the same.

The computational approach given results more close to practical values through analyses.[7]

Experimental results

Type of test: Vibration test

Aim of test: To record natural frequency through physical experimentation while comparing results with finite element modeling

Name of the Port: Automotive gear

Machine Type: FFT Analyzer[8]

Instrument used: Accelerometer, RT Pro Photon software

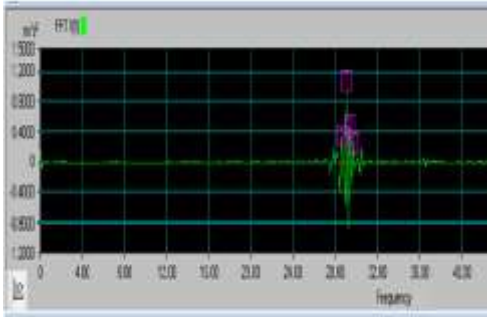


Fig No 7. Test graph

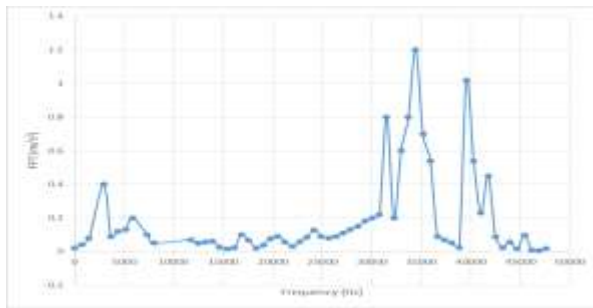


Fig No 8. FFT graph

Tabel 6 : Gears parameters

Material (EN9)	Readings determined by FEA Method	Reading recorded during physical experimentation	% Variation results analysis Vs Experiment
1	32227 HZ	34612 HZ	6.80%

The natural frequency of gear obtained through FFT Test concurs fairly with the results obtained by FEA Method. Considering variation in the material properties and specification in the test specimen, the results are acceptable

**Conclusion**

Modal analysis is evolved as standard tool for structural dynamic problem analysis & design optimization. The research area is very dynamic with

a focus on performance improvement, test cost reduction and the development of new application areas. Table 3, 4 and 5 result concluded that En353 material is better for spur gear. 10% validation is allowed in experiment and computational analysis. Hence the results are validated and modification in material has brought 4% error reduction.

**Acknowledgment**

I thanks to Dr. vikrama singh. and prof.p.p.shreshtha for introducing me the amazing culture and philosophy behind modal analysis of spur gear.

**References**

- [1] Luo Yutao\*, Tan Dia “Dynamics Modeling of Planetary Gear Set Considering Meshing Stiffness Based on Bond Graph” *Procedia Engineering* 24 (2011) 850 – 855
- [2] Jong Boon Ooi1, Xin Wang1, ChingSeong Tan2, Jee-Hou Ho3 and Ying Pio Lim1 “Modal and stress analysis of gear train design in portal axle using finite element modeling and simulation” *Journal of Mechanical Science and Technology* 26 (2) (2012) 575~589
- [3] Zhonghong Bu, Geng Liu , Liyan Wu “Modal analyses of herringbone planetary gear train with journal bearings” *Mechanism and Machine Theory* 54 (2012) 99–115
- [4] K. J. HUANG AND T. S. LIU “Dynamic Analysis of a spur gear by the dynamic stiffness method” *Journal of Sound and vibration* (2000) 234(2), 311}329
- [5] Vera Nikolic-stanojevic “Eigenfrequency analysis of spur gear pair with moving eccentric masses on a body of one of the gears” *FME Transaction* (2007)35,157-163
- [6] MatsAkerblom “Gear test rig noise and vibration testing of cylindrical gears”
- [7] Brian.J.Schwarz and Mark H .Richardson “Experimental modal analysis” *Vibrant technology ,Inc. Jamestown ,California* 95327(Oct 1999)
- [8] www.aeroflex.com “Introduction to FFT Analysis”
- [9] David V.Hutton “Fundamentals of finite element analysis” ,Tata McGraw-Hill Edition.